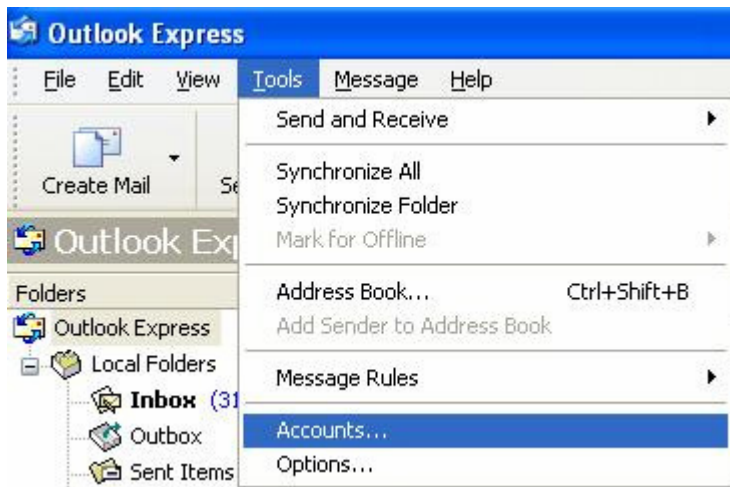


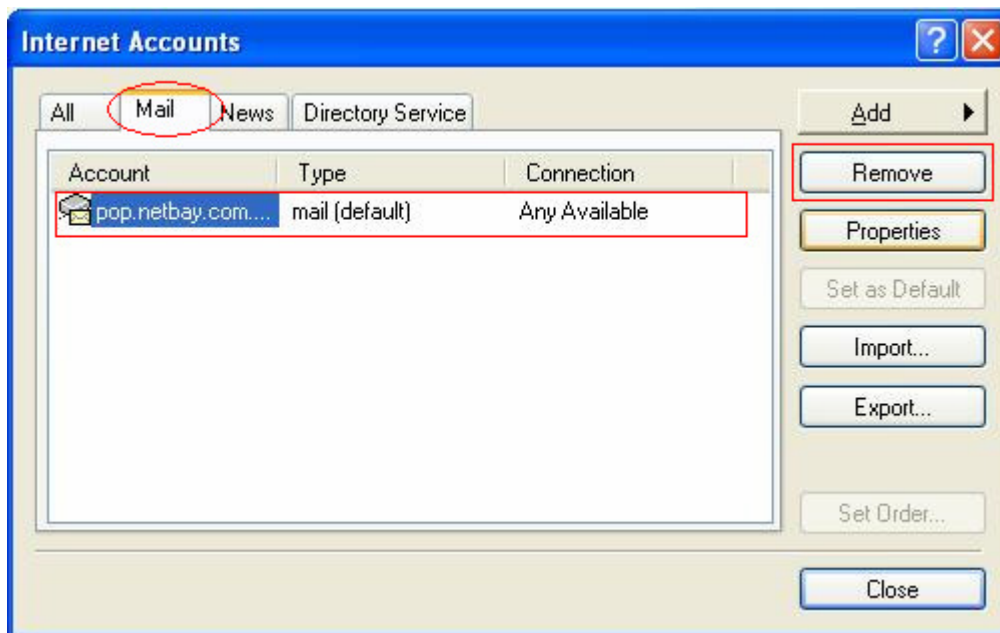


Email setup: Netbay for Outlook Express

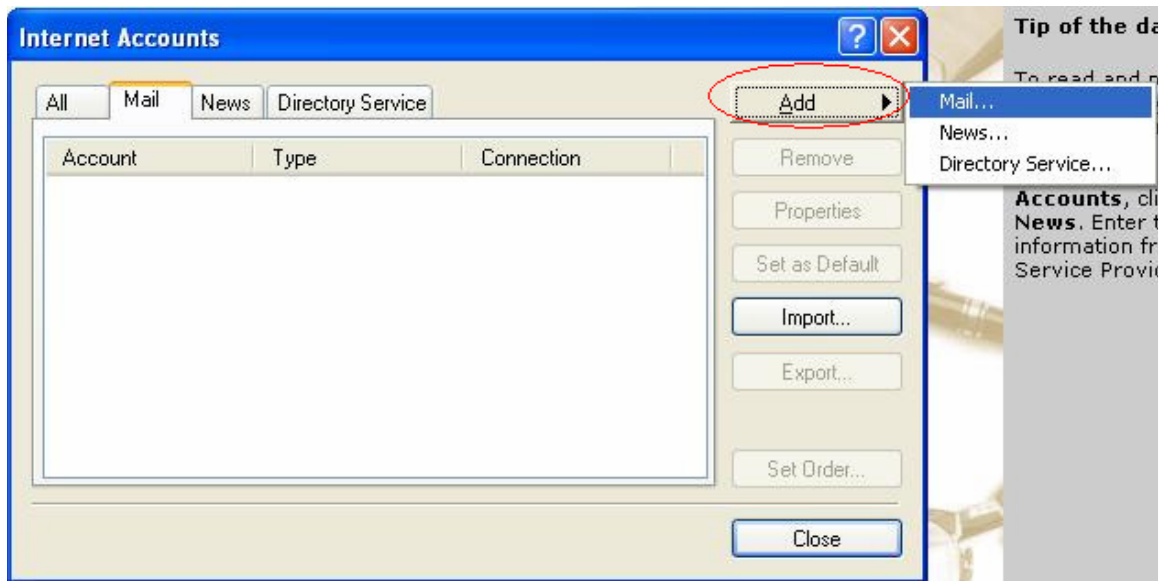
1. Open **Outlook Express**, click on **Tools – E-mail Accounts**



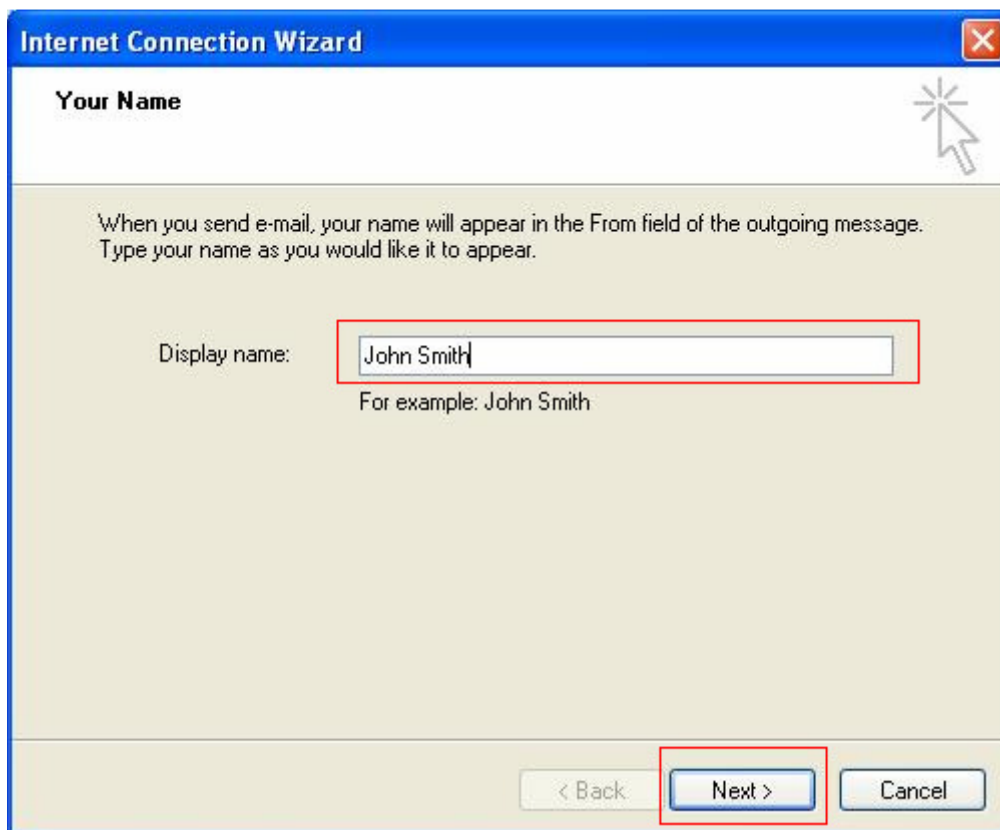
2. Click **Mail Tab** > Remove duplicate Email Account settings (if any exist)



3. Click **Add**, Select **Mail**



1. Enter your name, click **Next**



4. Enter your full email address, Click **Next**



5. Enter settings as per the screen below, and note that:
 - a. Incoming mail server type: POP3
 - b. Incoming mail server: pop.gmail.com
 - c. Outgoing mail server: smtp.gmail.com

Click **Next** when done.

The screenshot shows the 'Internet Connection Wizard' dialog box, specifically the 'E-mail Server Names' step. The window has a blue title bar with the text 'Internet Connection Wizard' and a close button (X) in the top right corner. Below the title bar, the text 'E-mail Server Names' is displayed. The main area of the dialog contains the following elements:

- A label: 'My incoming mail server is a' followed by a dropdown menu showing 'POP3' and a small downward arrow, followed by the text 'server.'.
- A label: 'Incoming mail (POP3, IMAP or HTTP) server:' followed by a text input field containing 'pop.netbay.com.au'.
- A label: 'An SMTP server is the server that is used for your outgoing e-mail.' followed by the text 'Outgoing mail (SMTP) server:' and a text input field containing 'smtp.netbay.com.au'.
- At the bottom, there are three buttons: '< Back', 'Next >', and 'Cancel'. The 'Next >' button is highlighted with a red rectangular box.

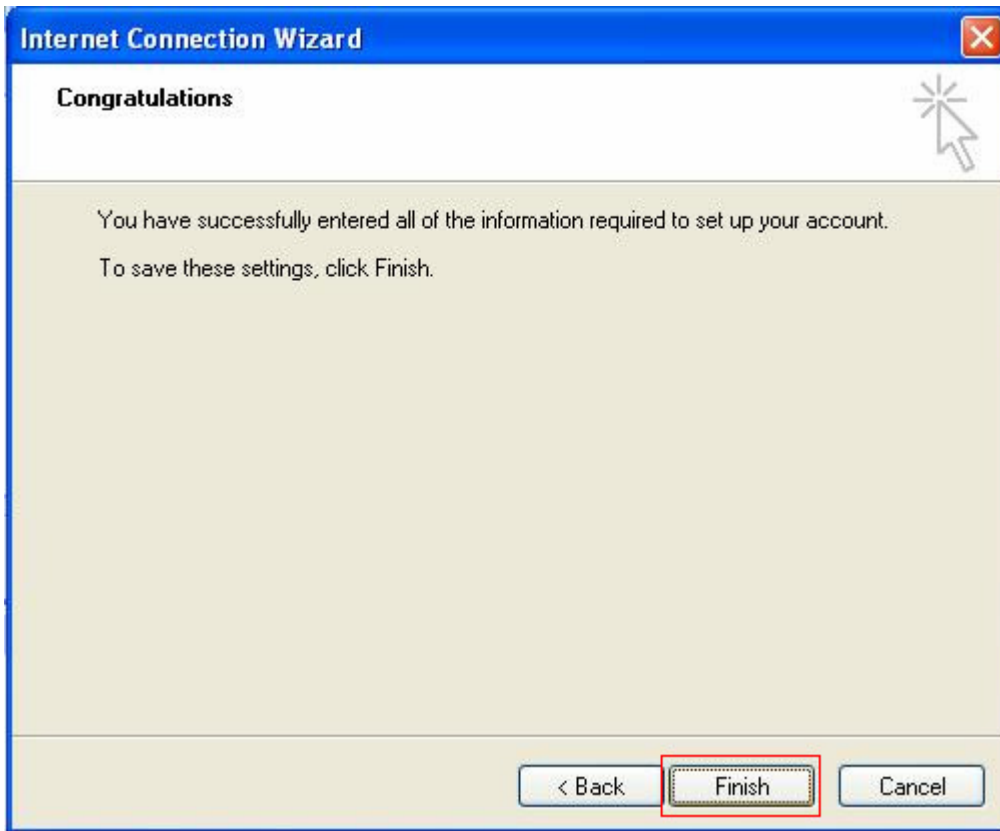
6. Enter settings as per the screen below, and note that:
 - a. Account name: your full Gmail email address
 - b. Password: your Gmail password

Click **Next** when done.

The screenshot shows a Windows dialog box titled "Internet Connection Wizard" with a sub-header "Internet Mail Logon". The dialog contains the following elements:

- A title bar with a close button (X) in the top right corner.
- A cursor icon in the top right corner.
- Instructional text: "Type the account name and password your Internet service provider has given you."
- An "Account name:" label followed by a text input field containing "john@netbay.com.au".
- A "Password:" label followed by a password input field containing ten black dots. This field is highlighted with a red rectangular box.
- A checked checkbox labeled "Remember password".
- Instructional text: "If your Internet service provider requires you to use Secure Password Authentication (SPA) to access your mail account, select the 'Log On Using Secure Password Authentication (SPA)' check box."
- An unchecked checkbox labeled "Log on using Secure Password Authentication (SPA)".
- At the bottom, three buttons: "< Back", "Next >" (highlighted with a red rectangular box), and "Cancel".

7. Click **Finish** to complete



8. You have successfully set up Netbay email on Outlook Express!