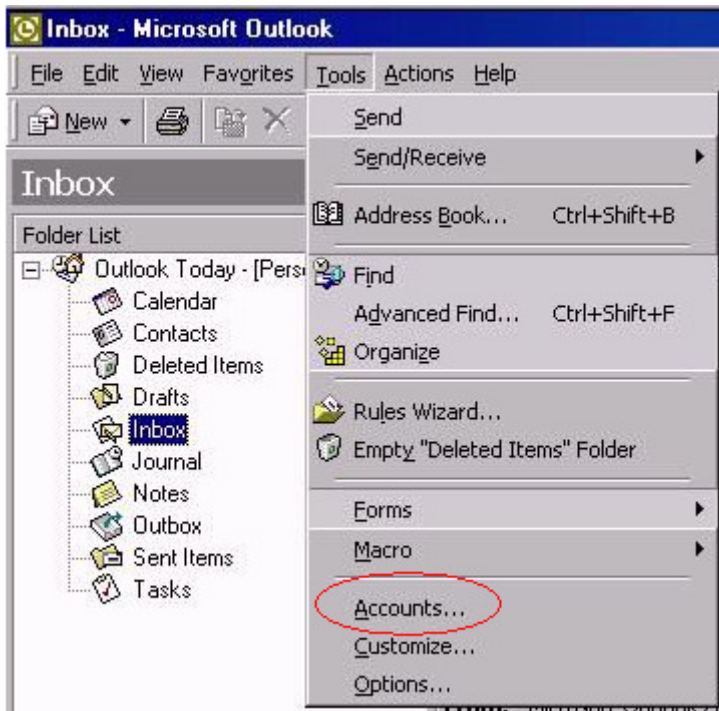


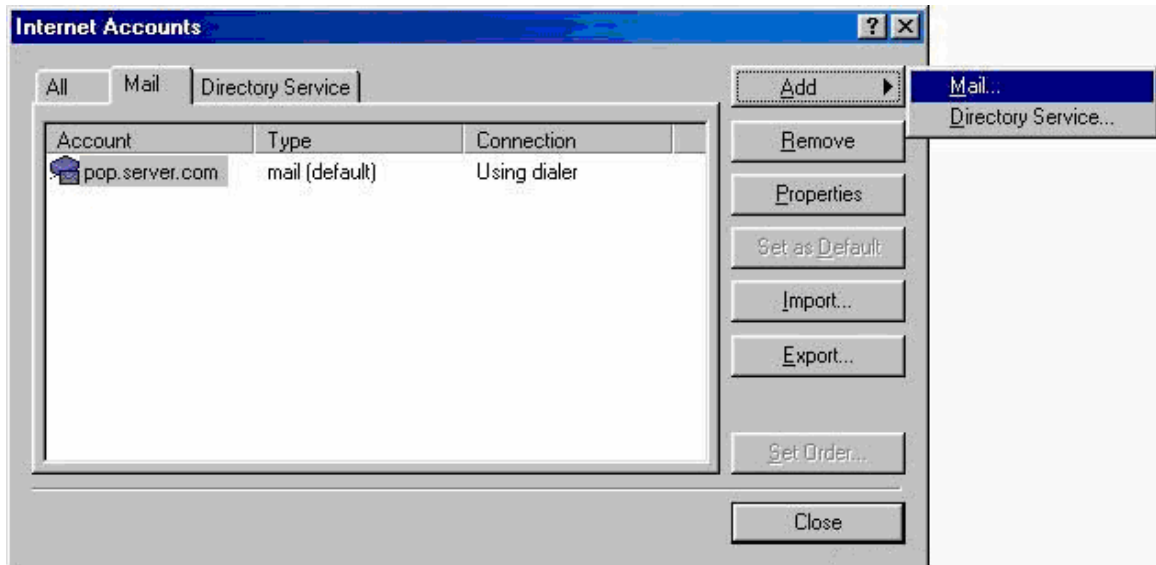


## Email setup: Netbay for Microsoft Outlook 2000

1. Open Outlook 2000, click on **Tools – Accounts**



2. Click on the **Mail** tab, then **Add - Mail**



3. Enter your name, click **Next**



4. Enter settings as per the screen below, and note that:
  - a. Incoming mail server type: POP3
  - b. Incoming mail server: pop.netbay.com.au
  - c. Outgoing mail server: smtp.netbay.com.au

Click **Next** when done.



The screenshot shows the 'Internet Connection Wizard' dialog box, specifically the 'E-mail Server Names' step. The window title is 'Internet Connection Wizard' and the subtitle is 'E-mail Server Names'. The main content area contains the following text and input fields:

My incoming mail server is a  server.

Incoming mail (POP3 or IMAP) server:

An SMTP server is the server that is used for your outgoing e-mail.  
Outgoing mail (SMTP) server:

At the bottom of the dialog box, there are four buttons: '< Back', 'Next >', 'Cancel', and 'Help'. The 'Next >' button is highlighted with a dashed border, indicating it is the active or recommended action.

5. Enter settings as per the screen below, and note that:
  - a. Account name: your email address
  - b. Password: your email password

Click **Next** when done.



The screenshot shows a Windows dialog box titled "Internet Connection Wizard" with a sub-header "Internet Mail Logon". The dialog contains the following elements:

- A text box for "Account name:" containing the text "john@netbay.com.au".
- A text box for "Password:" containing a series of asterisks "\*\*\*\*\*".
- A checked checkbox labeled "Remember password".
- Instructional text: "If your Internet service provider requires you to use Secure Password Authentication (SPA) to access your mail account, select the 'Log On Using Secure Password Authentication (SPA)' check box."
- An unchecked checkbox labeled "Log on using Secure Password Authentication (SPA)".
- Four buttons at the bottom: "< Back", "Next >" (highlighted with a dashed border), "Cancel", and "Help".

6. Select **I will establish my Internet connection manually**, click on **Next**, **Finish**



7. You have successfully set up Netbay email on Microsoft Outlook 2000!