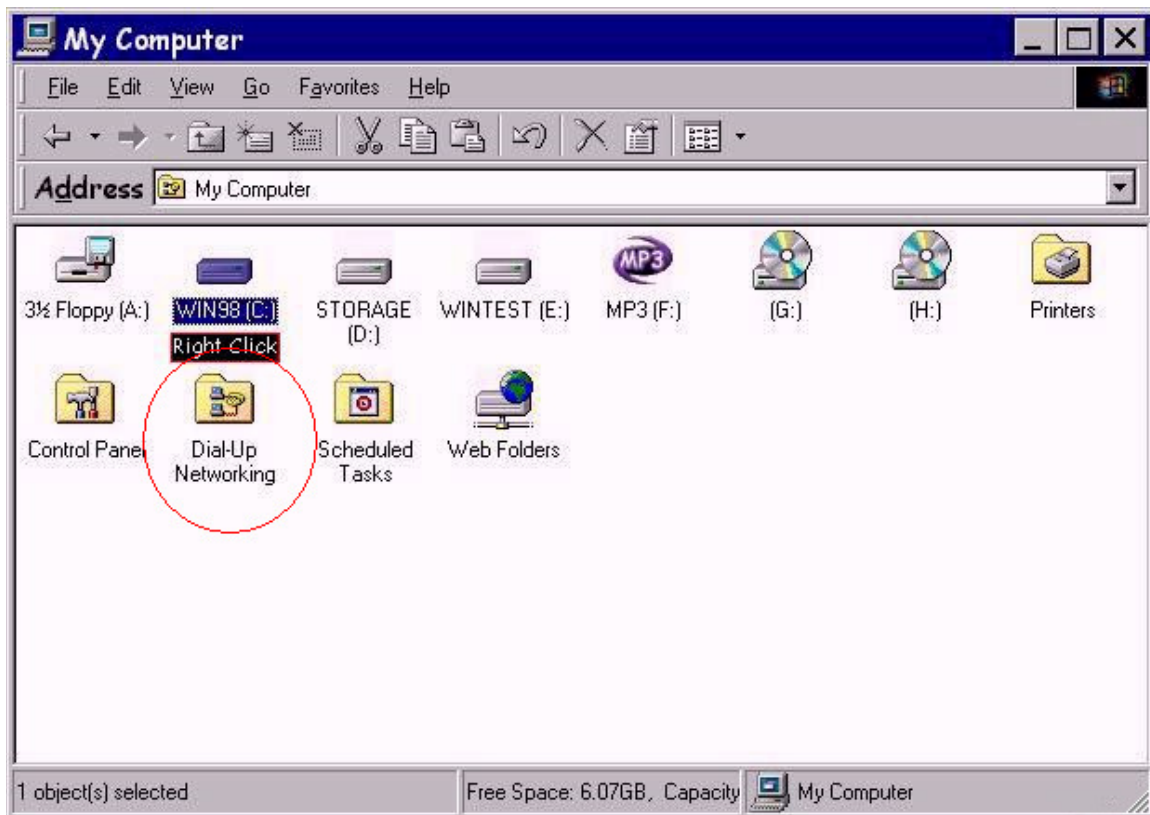


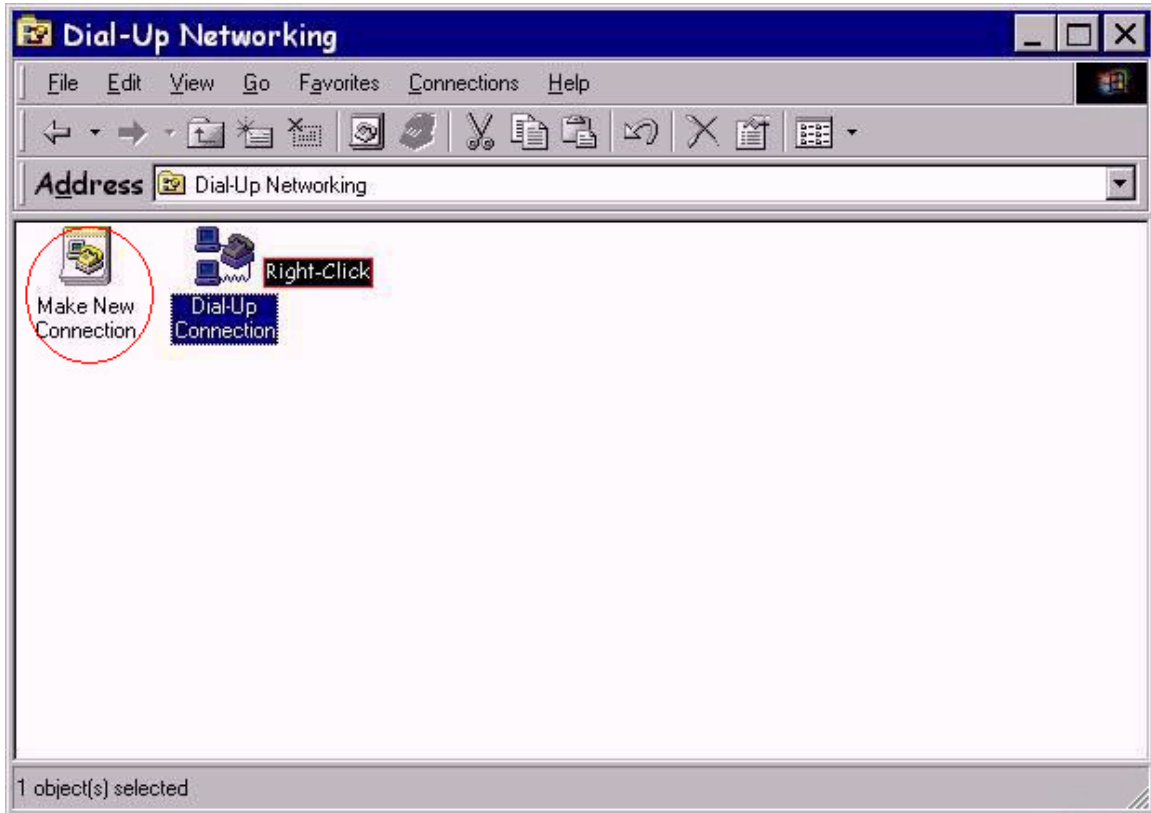


## Dialup setup: Windows 98

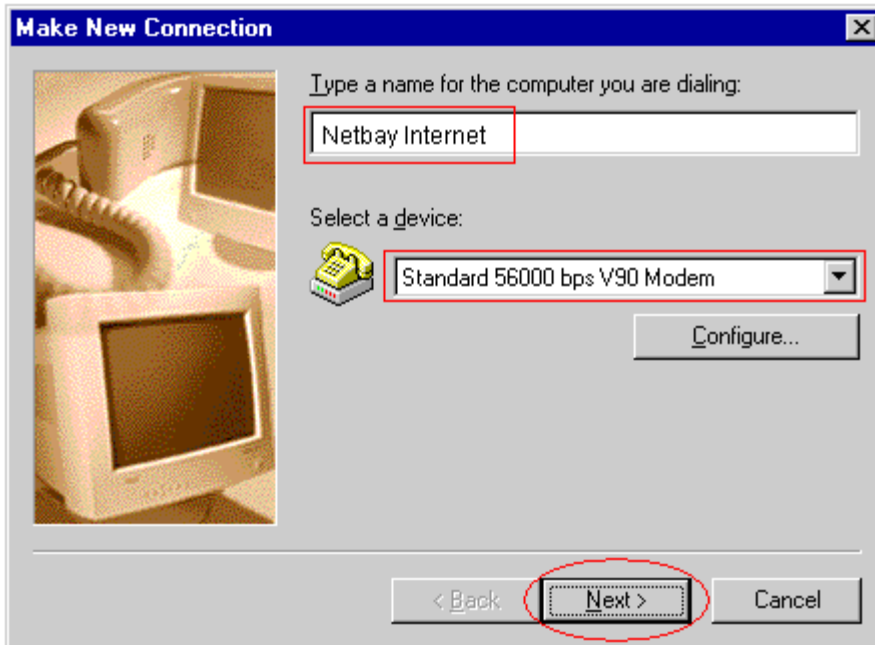
1. On the desktop, double-click the **My Computer** icon.
2. Double-click on the **Dial-up Networking** icon.



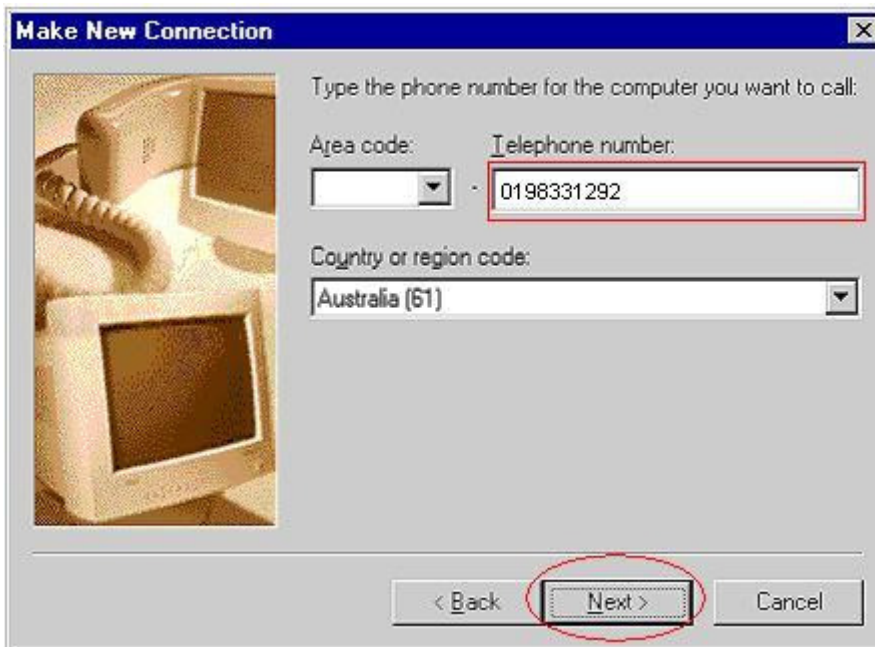
3. Delete any existing unusable **Connection** icons (recommended), then double-click on the **Make New Connection** icon.



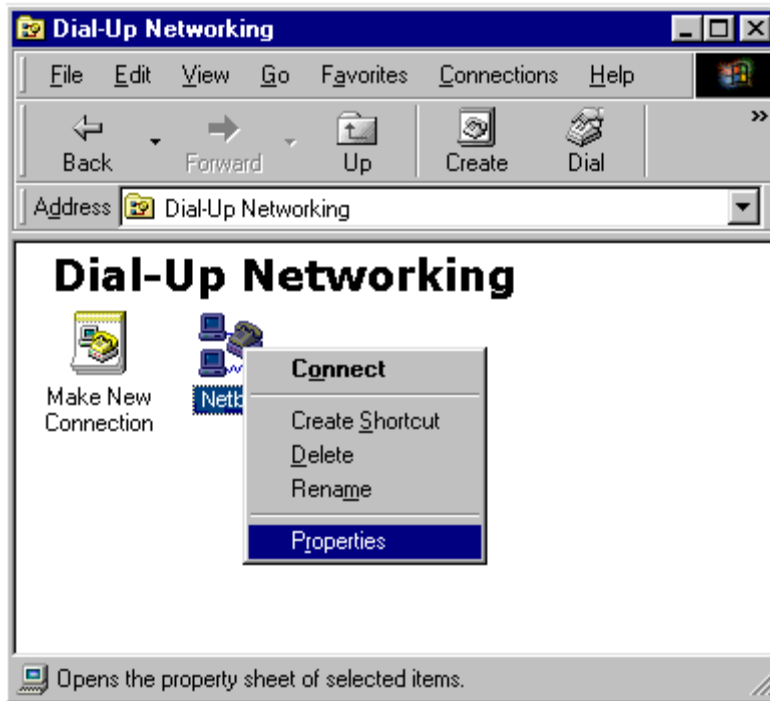
4. Enter **Netbay Internet** as shown below. Select the appropriate modem from the **Select a device** drop down list, and click **Next**.



5. Enter **0198331292** as shown below, click **Next** and click **Finish**.

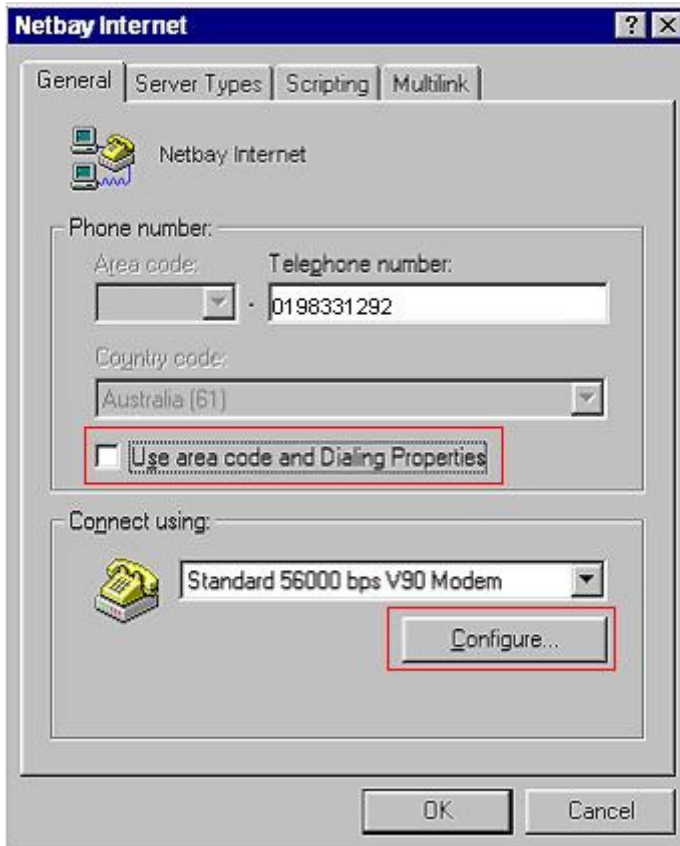


6. In the **Dial-Up Networking** window, right-click the **Netbay Internet** icon and select **Properties**.



7. Untick the box beside **Use area code and Dialing Properties**

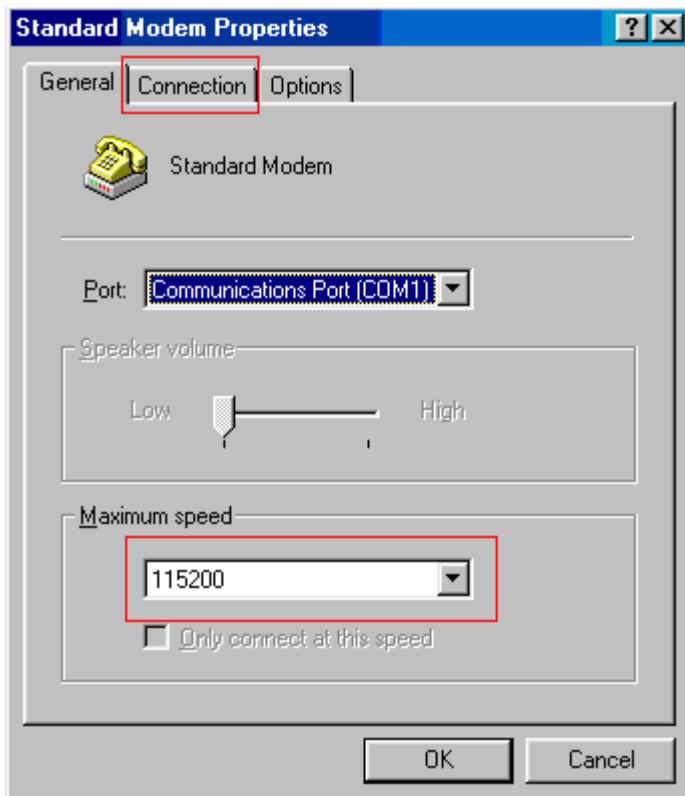
Click **Configure** when done.



8. Select **115200** in the dropdown box beside **Maximum speed (bps)**.

Tick boxes as shown below, and click OK.

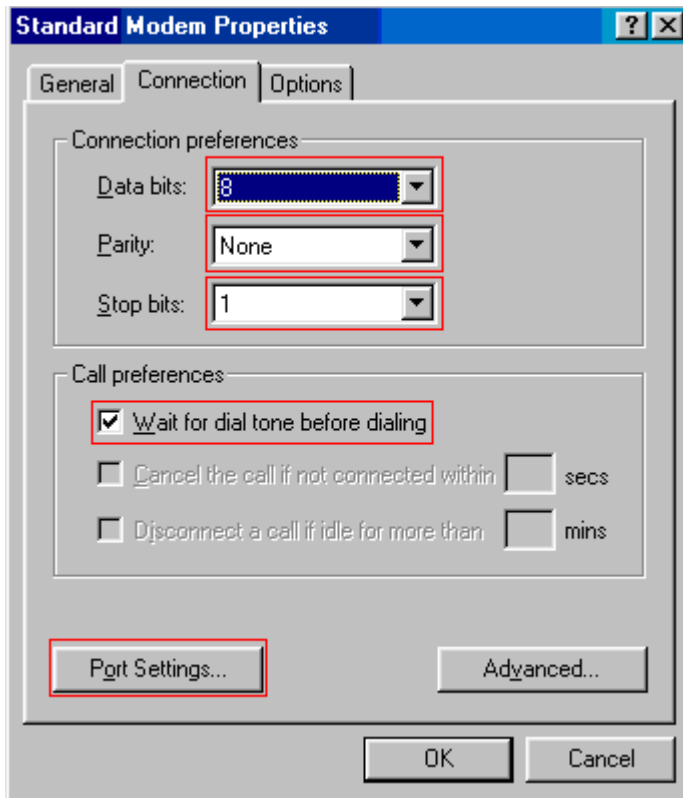
Click on the **Connection** tab.



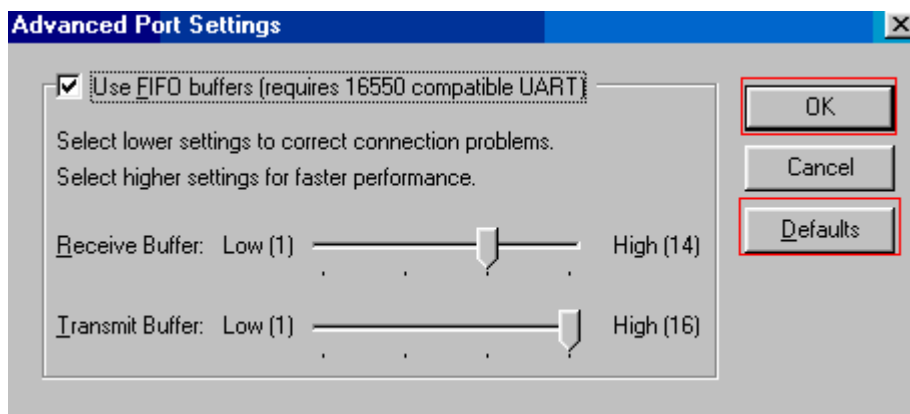
9. Make sure your setting similar to the screen capture below.

Note: **Data bits: 8**  
**Parity: None**  
**Stop bits: 1**

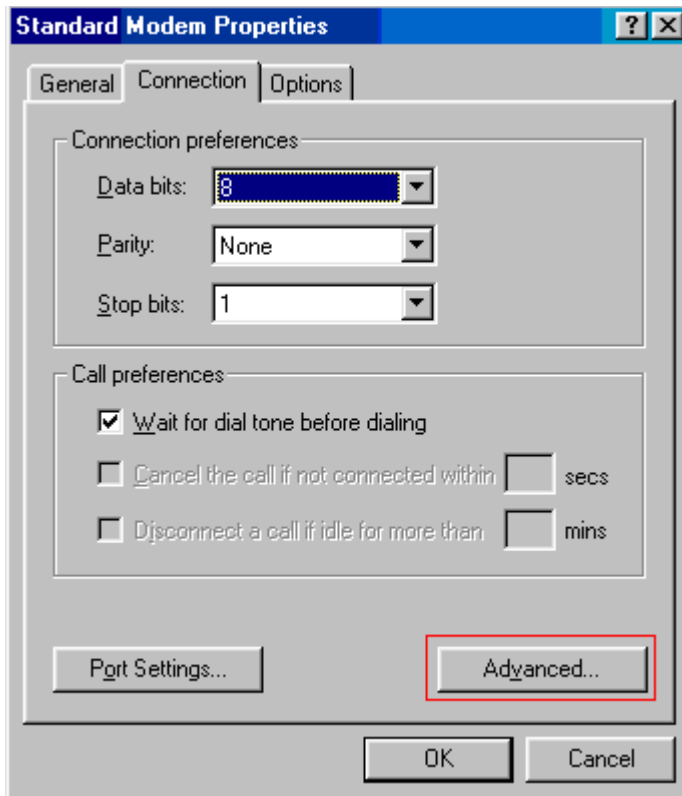
Click on **Port Settings** when done.



10. Click on the **Defaults** button once and click **OK**

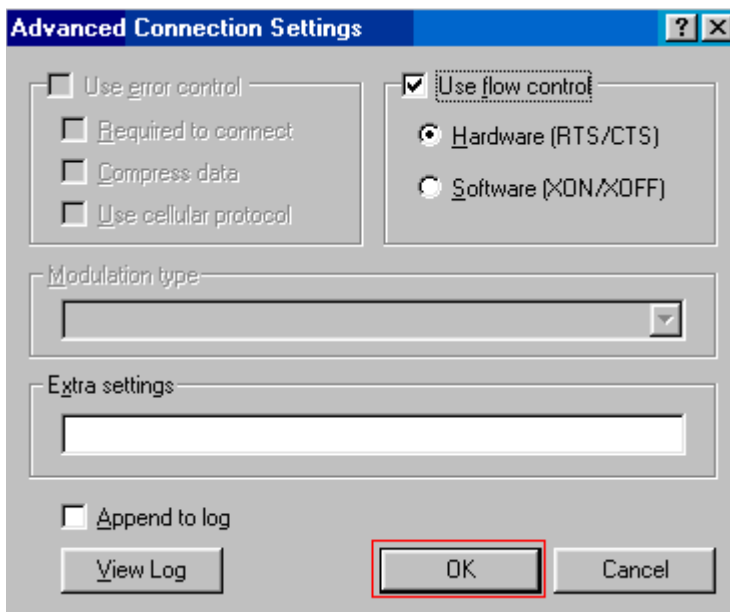


11. Click on **Advanced**.



12. Make sure the respective boxes are ticked/unticked as shown below.

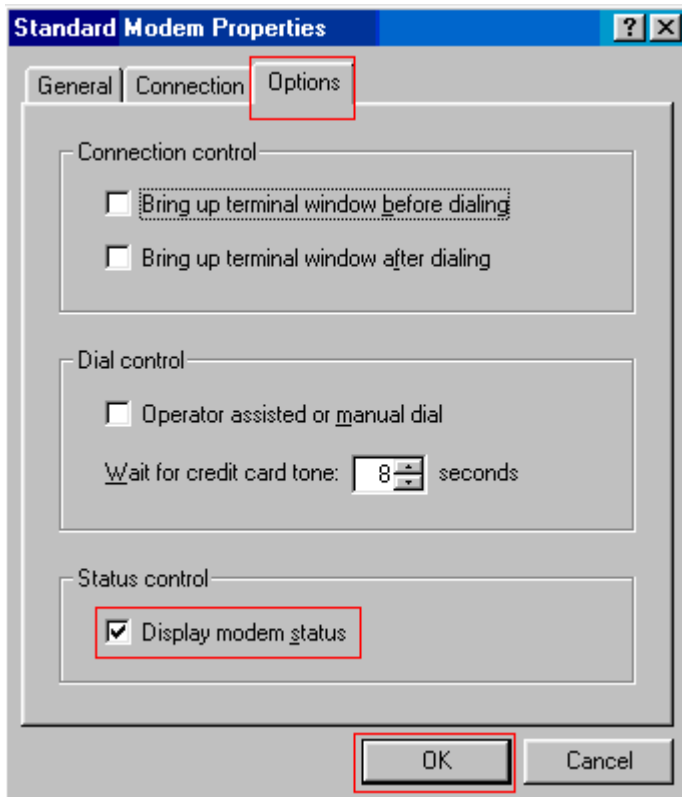
Click **OK** when done and click on **Option** tab.





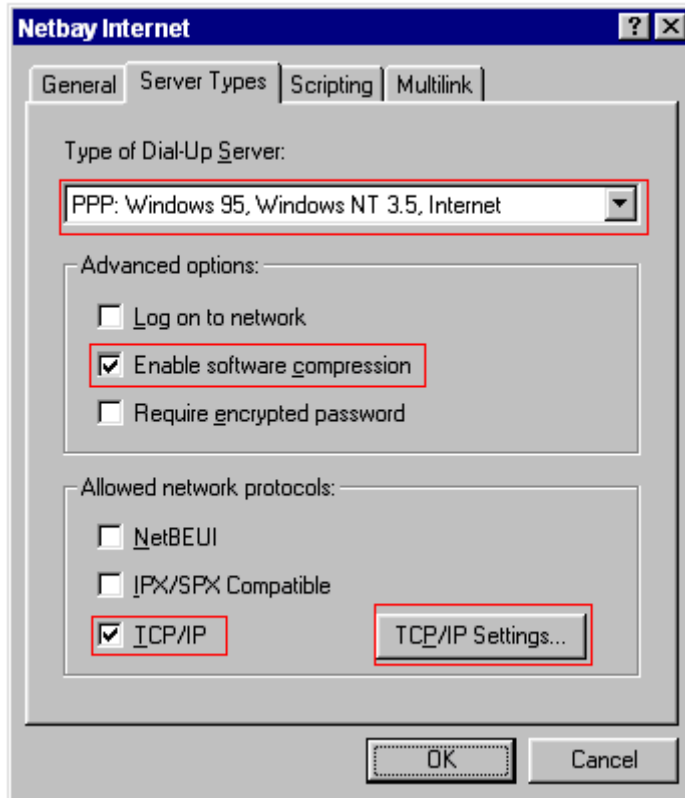
13. All of the check boxes should have no ticks, except the **Display modem status** check box has a tick as shown below.

Click on **OK** when done and click on **Server Types** tab.



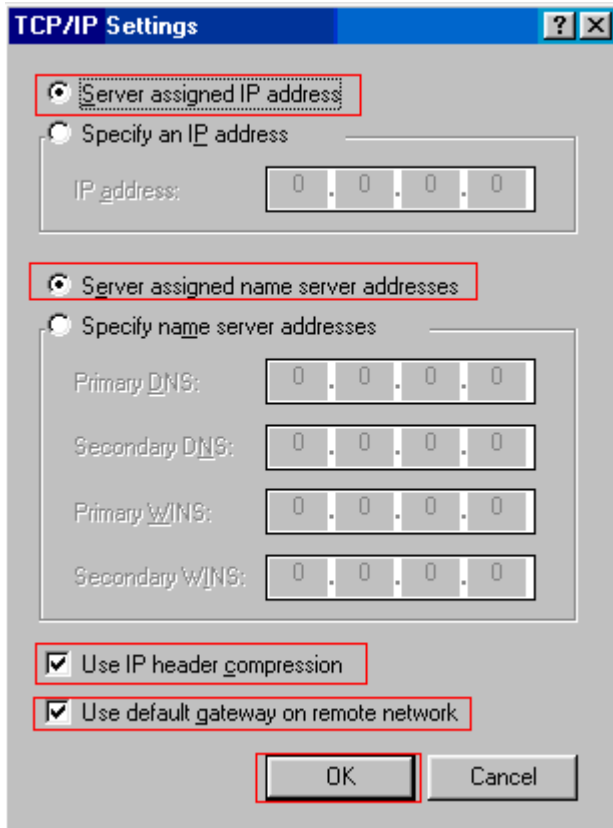
14. Tick the box beside **Enable software compression**, **TCP/IP** and Make sure all other check boxes have **NO** ticks as shown below.

Click on **TCP/IP Settings** when done.



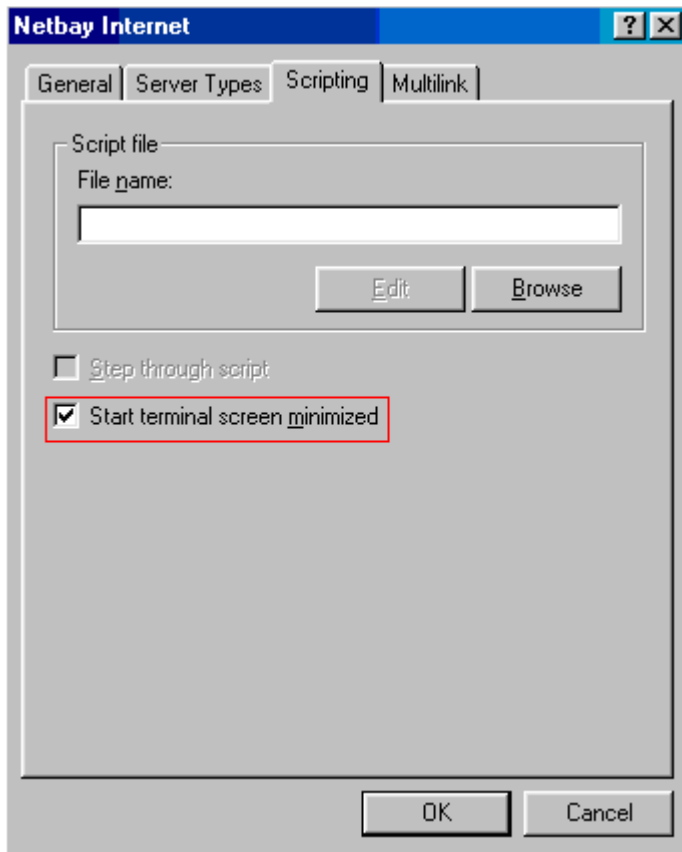
15. Click on the radio button beside **Server assigned IP address** and **Server assigned name server addresses**. Tick the box beside **Use IP header compression** and **Use default gateway on remote network**.

Click **OK** when done and click on **Scripting** tab.



16. Tick the box beside **Start terminal screen minimized**.

Click on **Multilink** tab when done.



17. Click on the radio button beside **Do not use additional devices.**

Click on **OK** when done.

