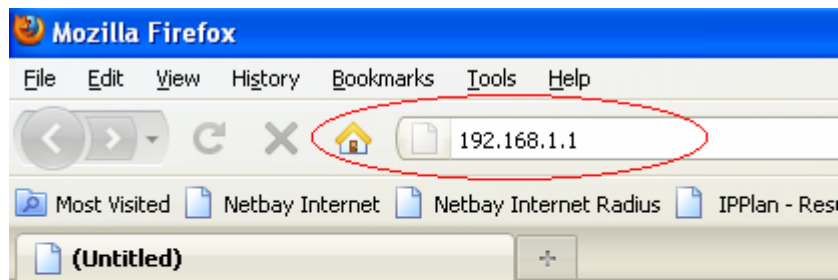


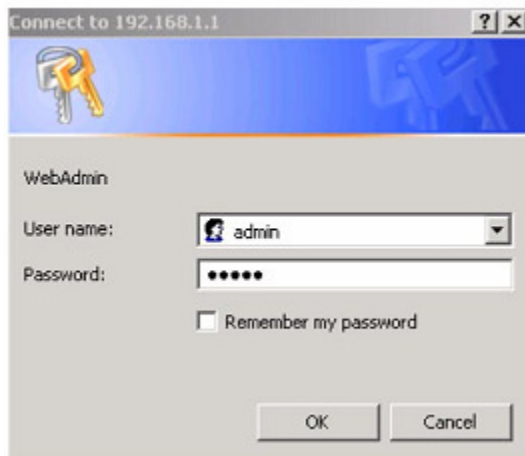


Dynalink RTA 1025W ADSL1/ADSL2+ setup guide

1. Start your browser (Internet Explorer, Mozilla Firefox, Google Chrome etc).
2. In the **address bar**, type in 192.168.1.1 and press “Enter”

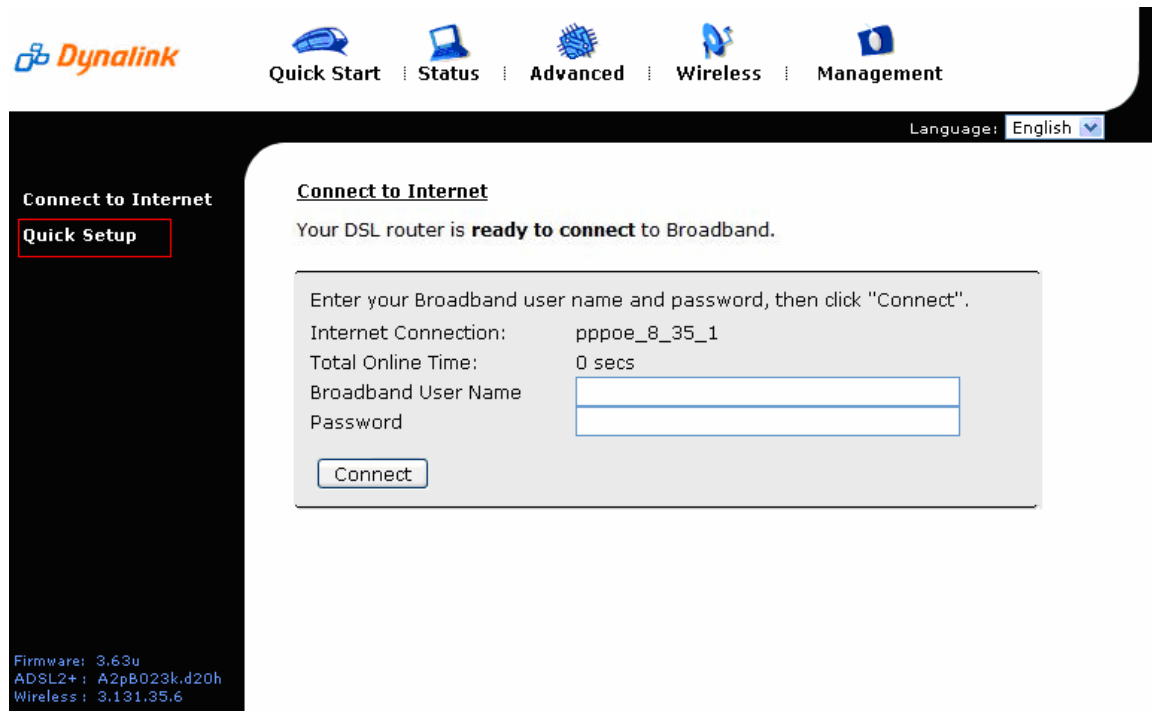


3. WebAdmin login screen:
You will be prompted to enter username and password.
The default username is **admin** and the password is **admin**.



After you login successfully, the main screen will appear.

4. RTA1025W main screen:
Click on **Quick Setup**



5. Quick Setup screen:
 - Uncheck **Auto Scan Internet Connection (PVC)**
 - Ensure VPI is **8**, VCI is **35**
 - Click on **Next**

Quick Setup

This Quick Setup will guide you through the steps necessary to configure your ADSL router.

Select the check box below to scan the Internet connection automatically. It is recommended that there is no any PVC configured in your ADSL router before performing auto-scanning connection.

Auto Scan Internet Connection (PVC)

Configure Internet Connection -- ATM PVC

Please enter VPI and VCI numbers for the Internet connection which is provided by your ISP.

VPI: (0-255)
VCI: (32-65535)

All original settings will be replaced by new settings after you finish these steps.

6. Configure Internet Connection – Connection Type screen:
 - Protocol: Select **PPP Over Ethernet (PPPoE)**
 - Encapsulation Type: Select **LLC/SNAP**
 - Click on **Next**

Configure Internet Connection - Connection Type

Select the protocol and encapsulation type with the ATM PVC that your ISP has instructed you to use.

Protocol:

- PPP over ATM (PPPoA)
- PPP over Ethernet (PPPoE)
- IP over ATM (IPoA)
- Bridging

Encapsulation Type:

7. Configure Internet Connection – WAN IP Settings screen:
 - Select **Obtain an IP address automatically**
 - Check **Enable NAT**
 - Click **Next**

Configure Internet Connection - WAN IP Settings

Enter information provided to you by your ISP to configure the WAN IP settings.

Obtain an IP address automatically

Use the following IP address:

WAN IP Address:

Enable NAT

MTU: (default: 1492)

8. Configure Internet Connection PPP User Name and Password screen:
 - PPP User Name: if your username is johndoe
 - ADSL1 username: johndoe@dsl.netbay.com.au
 - ADSL2+ username: johndoe@dsl2.netbay.com.au
 - PPP Password: Enter your password.
 - Session established by: Select **Always On**
 - Click on **Next**

Configure Internet Connection - PPP User Name and Password

In order to establish the Internet connection, please enter PPP user name and password that your ISP has provided.

PPP User Name :

PPP Password:

Session established by: Always On

Dial on Demand, Idle Timer
Disconnect if no activity for minutes

Manually Connect
Disconnect if no activity for minutes

9. Configure LAN side Settings screen:
 - Ensure the settings on your screen match the screen below.
 - Click on **Next**

Configure LAN side Settings

Enter the ADSL router IP address and subnet mask for LAN interface and then enable DHCP server on LAN interface to provide IP address settings for your computers.

Primary IP Address:

Subnet Mask:

Configure secondary IP address and subnet mask

MTU: (default: 1500)

DHCP Server On

Start IP:

End IP:

Lease Time: days hours minutes

DHCP Server Off

10. Confirmation screen:
 - Click on **Finish**

This Internet Connection -- Summary

Make sure that the settings below match the settings provided by your ISP.

Internet (WAN) Configuration:

VPI / VCI	8 / 35
Connection Type	PPPoE LLC/SNAP, Dial on Demand, Idle Timer 20 mins
NAT	On
WAN IP Address	Automatically Assigned
Default Gateway	Automatically Assigned
DNS Server	Automatically Assigned
QoS	On

LAN Configuration:

Primary LAN IP	192.168.1.1 / 255.255.255.0
Secondary LAN IP	0.0.0.0 / 0.0.0.0
DHCP Server	On 192.168.1.2 ~ 192.168.1.254
DHCP Lease Time	1 days 0 hours 0 minutes

Click "Finish" to accept these settings, and reboot the system.
Click "Back" to make any modifications.

11. The modem will save the new settings and reboot itself. Wait for a few minutes and you will be on the internet.